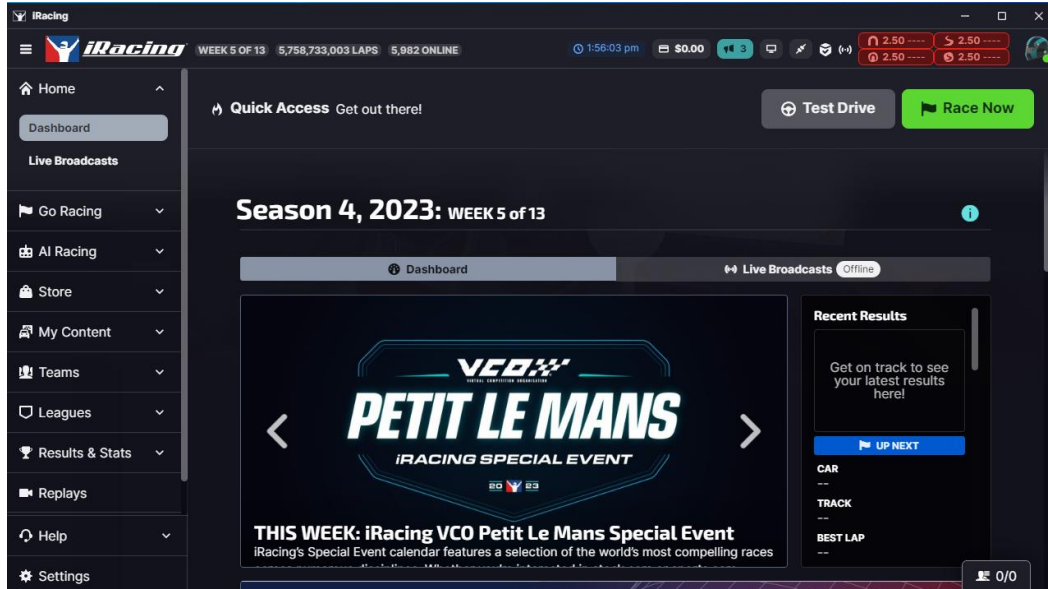


Input Guide - iRacing

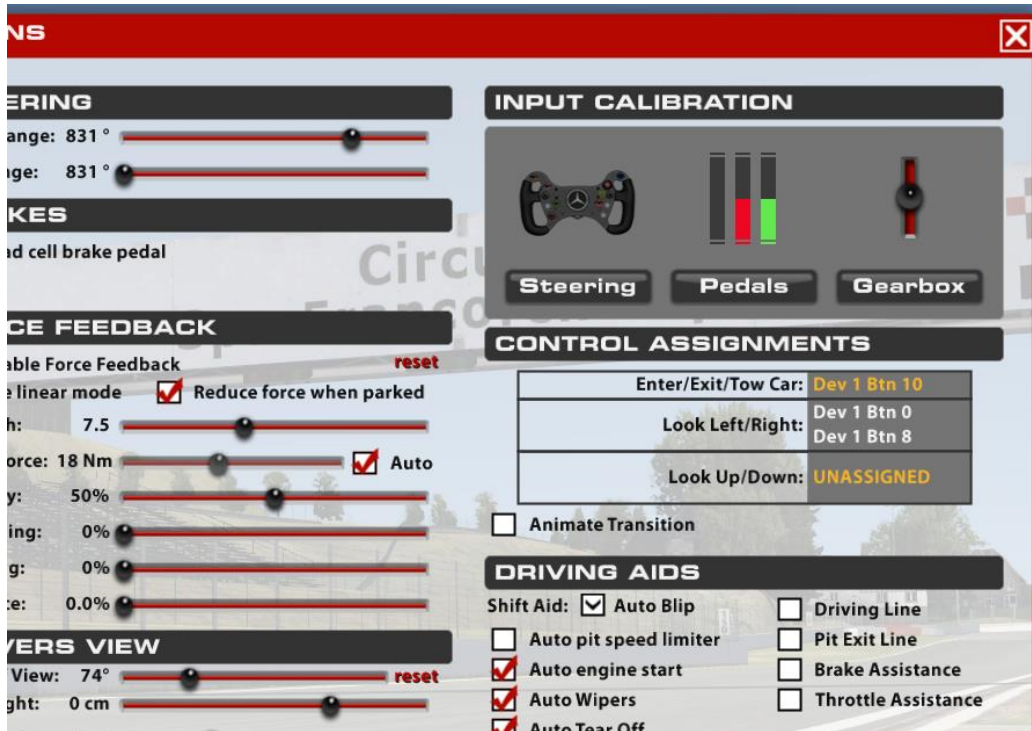
From the launcher, select Test drive.



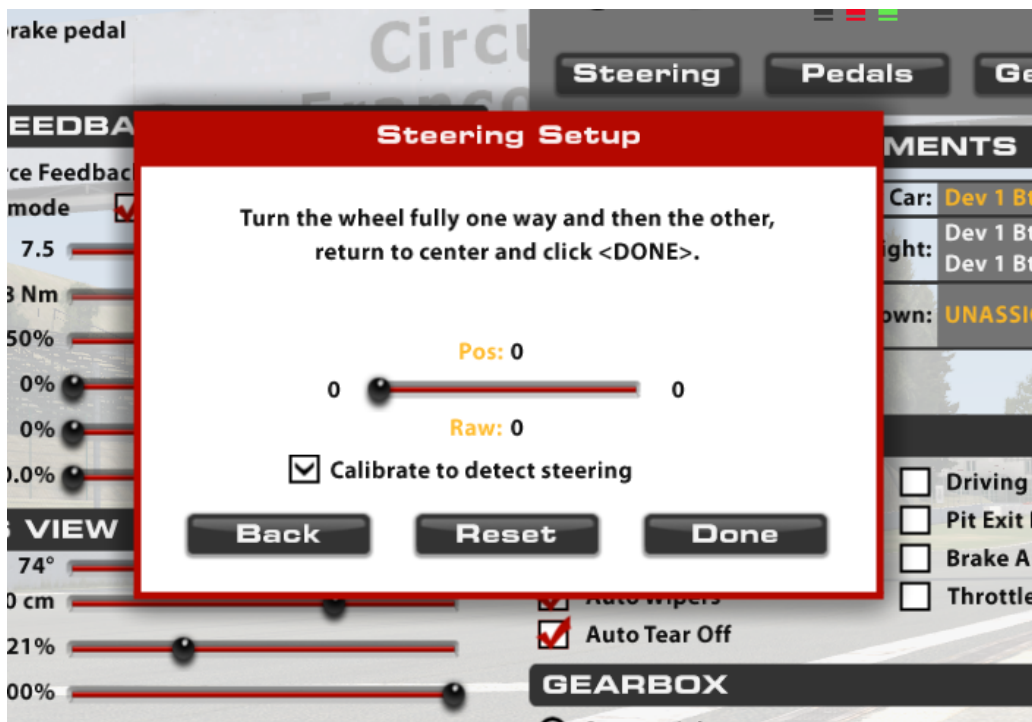
Once you are in the simulator, select options in the upper right corner.



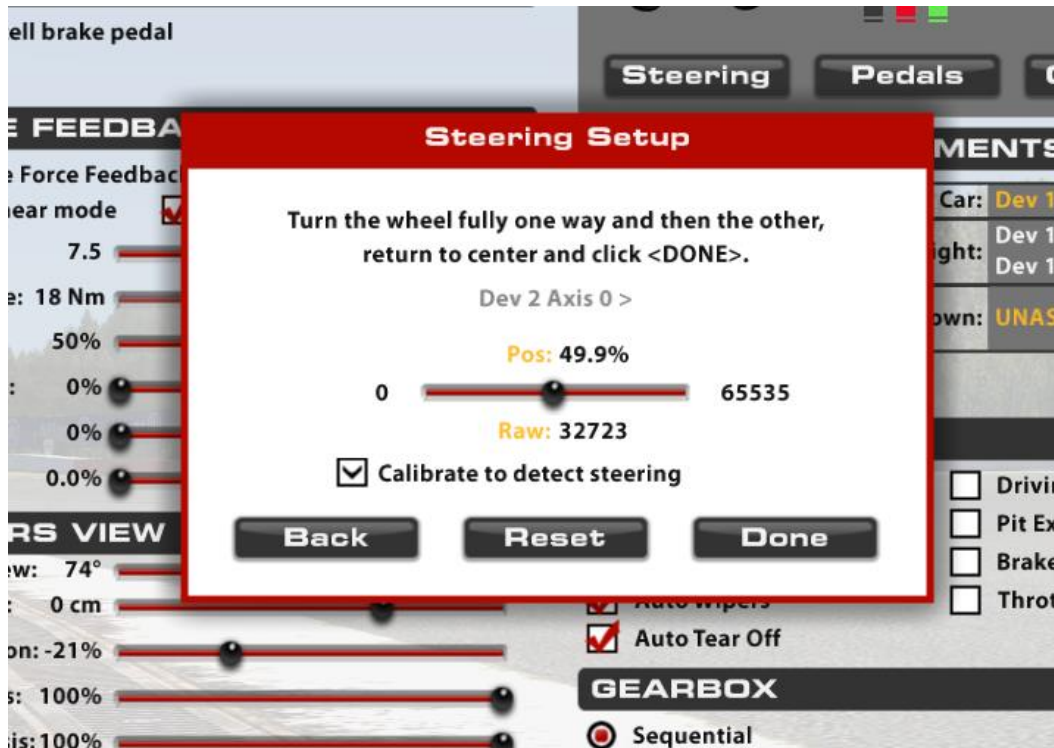
From here you will see an options screen, start by pressing steering.



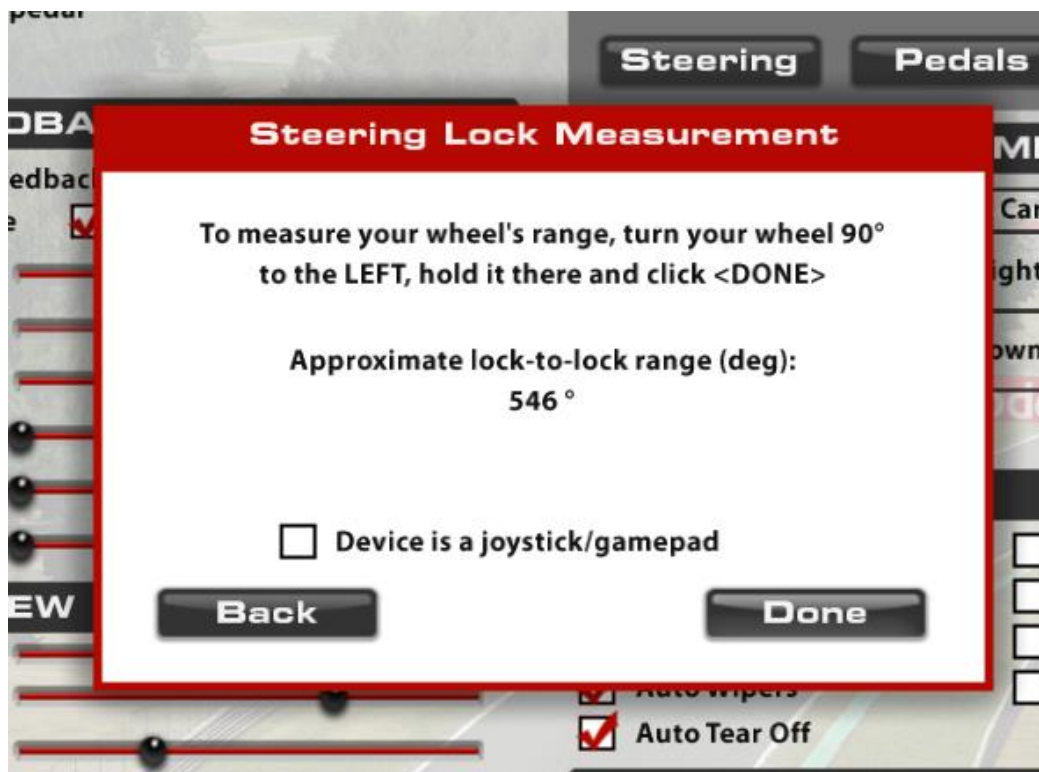
You then follow the onscreen guide.



Here's a reference of what it should look like when done correctly.



You then click done, and move on to the next step in the guide.



After finishing the steering setup, you move onto the pedals, here you once again follow the guide. Once the pedals are done you can do the gearbox setup. At the end of this it will ask if you want to setup a h-shifter, say no to this unless you have an h-shifter you want to use.

